

DUFOUR CATAMARAN 48



DUFOUR
CATAMARANS



Balance between inside and outside space

Dufour 48 Catamaran presents a perfect balance with the deck plan, the cockpit space, roof and foredeck divided into 1/3 of the total length.

The large proportion of the roof differs from the models of the category and offer the thought of a very wide space of the living room area. Indeed, it is a testimony of a balanced project in terms of exterior and interior space, developed to offer the greatest comfort in all seasons.

At the front, there are two outstanding sunbathing areas, separated by a large storage box and the anchor well.

The side decks are spacious, and secured by hull bulwarks along the entire length.

At the cockpit level, there are two steps, one on the port side and one on the starboard side, offering the access to the flybridge.



The flybridge

The flybridge is the key element of this project. Elaborated as a second cockpit, it expands considerably the living space outside. Traffic is ideal with the access from two stairs - through the cockpit from starboard, and the side decks from port.

It is equipped with a low table and surrounded by large seats and a wide sunbathing area.

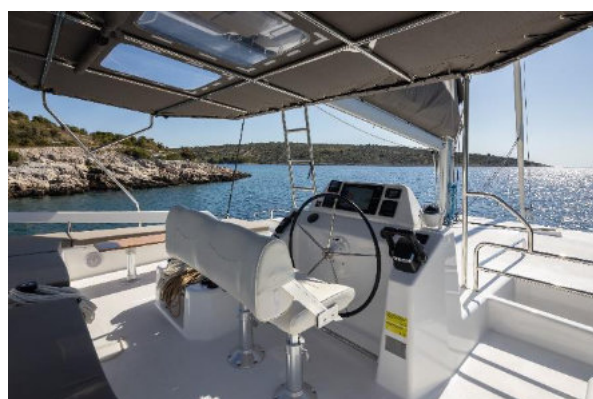


“Super Yachts” helm station

Located on the flybridge, the helm station offers an absolute advantage in terms of visibility.

The large console inspired by the superyachts, integrates all the equipment in a very ergonomic layout.

The three mainsail winches, jib and gennaker are easy to reach. The helmsman also benefits from an adjustable seat and wide bimini covering the whole flybridge.





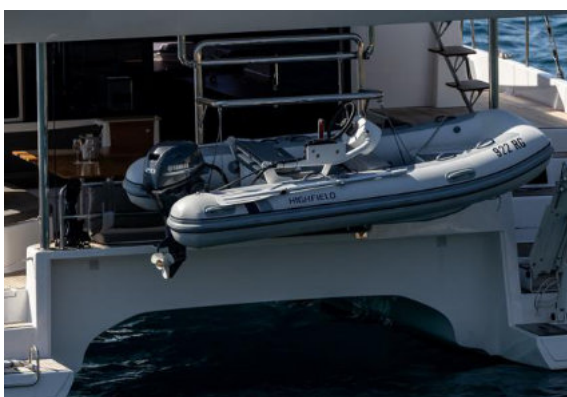
Functional cockpit as an extension of the living room

The cockpit space of the Dufour 48 is similar to a 50 feet boat or more. Indeed, the 8-metre boat's width provides excellent space distribution and ideal traffic on board.

There is a large table for 8 people, multiple seating and relaxation areas, as well as the gas plancha.

Various portholes provide incredible natural light in the rear cabins.

The large window door opens completely for full communication with the lounge area.



Standard dinghy hoist system

or

Hydraulic platform





Living room area and 360° vision

Dufour Catamaran 48 has been designed to satisfy the requirements of both owners and guests in charter wishing to live on board throughout the year. Offering a large living room was essential and the result is perfectly achieved.

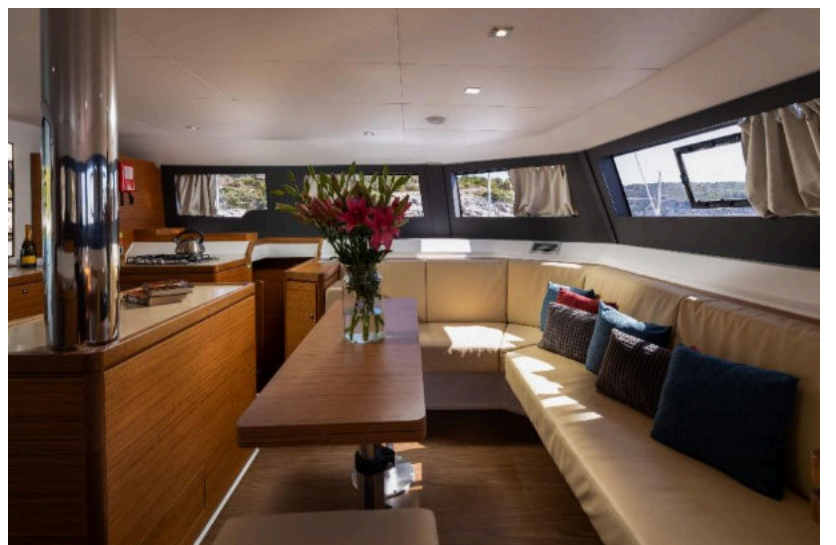
The kitchen connected to the cockpit, is fully equipped and ergonomic with many storage spaces.

At the front, there is the office space – chart table, equipped with a repeater screen and an autopilot control with joystick, to control the boat from the inside.

The sofa space - dining table, can be modulated in 3 positions - low table, dining table and double bed.

The wide 360° window facing the sea provides plenty of light.

The storage is various and well thought out, with a large console with drawers, ready to fit everything you need.





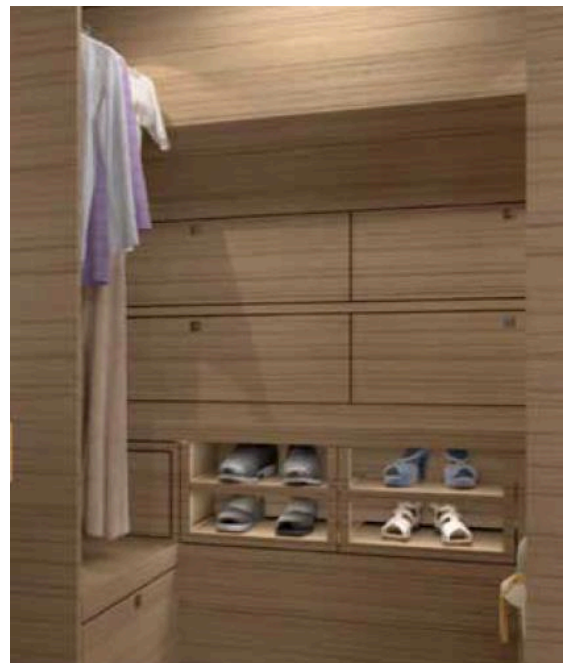
Owner's suite

Occupying the entire port float, the owner's suite will seduce at first sight.

The cabin which is equipped with a 200cm x 170cm bed is particularly bright and ventilated, thanks to its many opening portholes.

It also includes a large office area with a sea view and convenient high closets and drawers.

Ladies will be delighted by the huge dressing room and the large sofa. The head is in line with the highest standards, with a countertop washbasin on Corian worktops, a luminous furniture and a large separate shower.





Guest cabins with independent access

Dufour Catamaran 48 presents an unusual configuration to access the guest cabins.

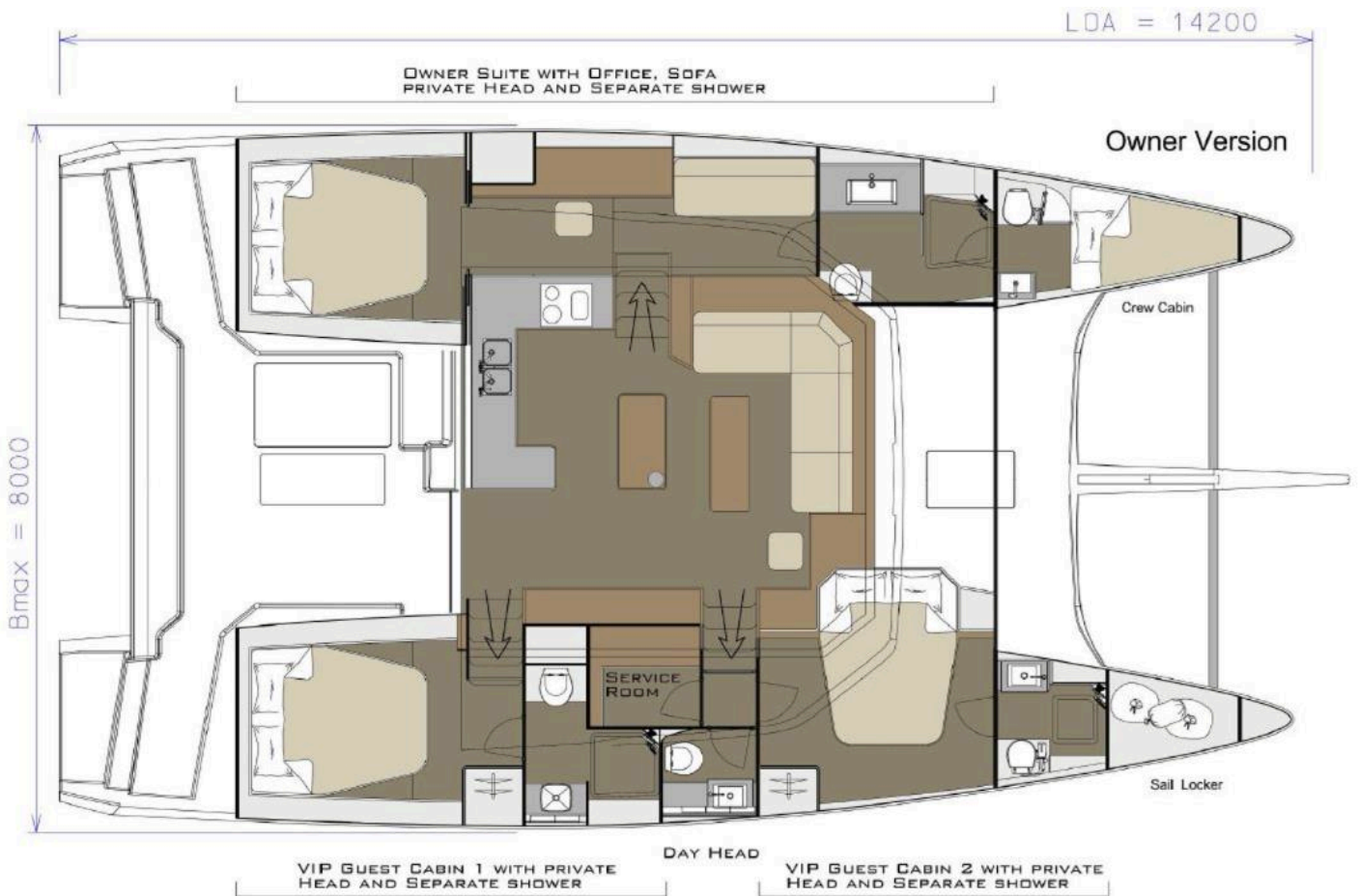
To guarantee the best possible privacy in each space, a double way towards the floats has been designed - one to the port, the other to the starboard.

So, all the cabins have a totally separate access and remain accessible from the lounge.

Each cabin includes its own bathroom with separate shower, as well as many closets and storage.

Ventilation and brightness are also ideally suited.





Layout A

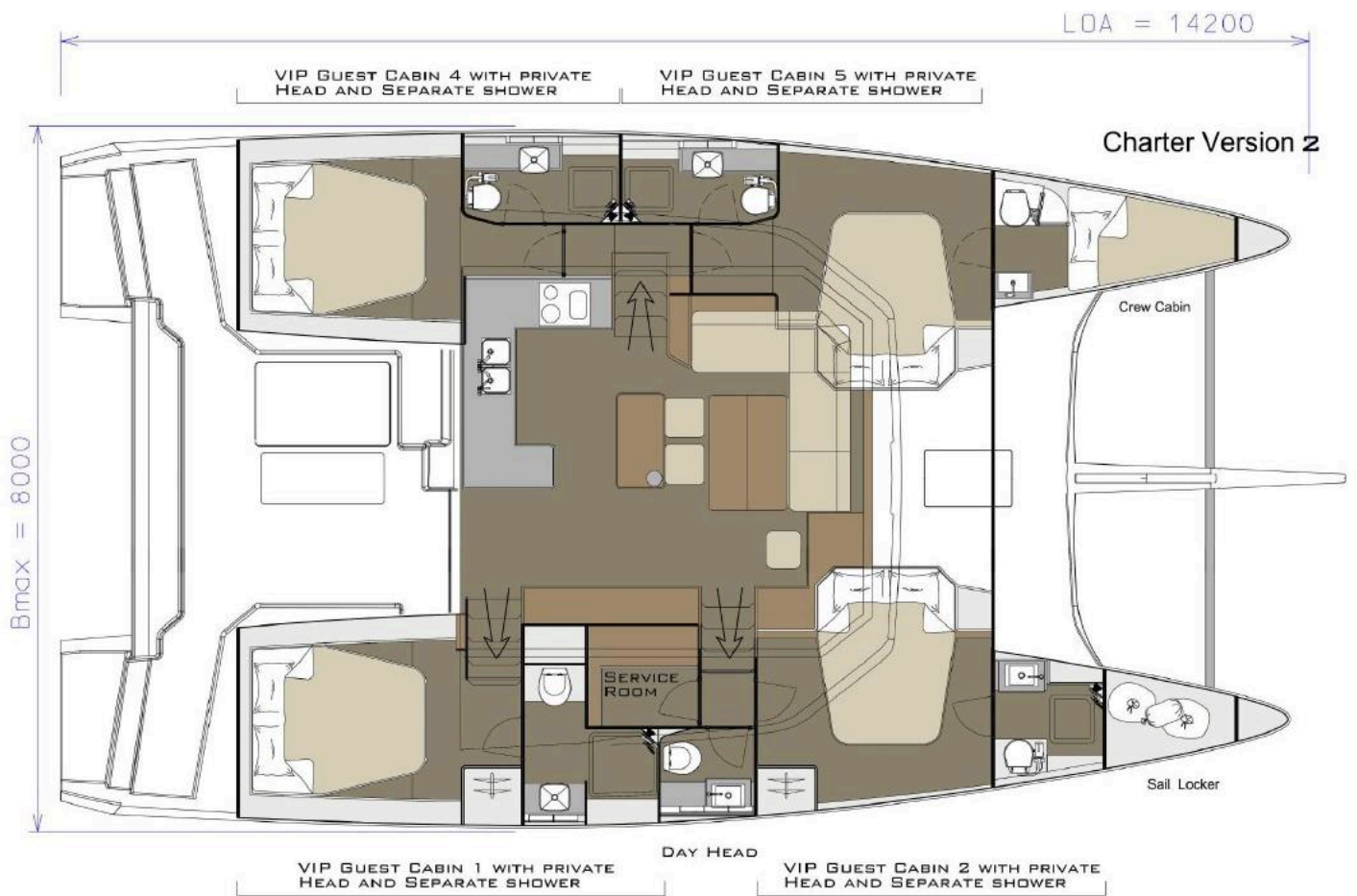
3 cabins - 4 heads + skipper

Port side float

- > 1 owner suite including a head and a separate shower
- > 1 skipper cabin

Starboard float

- > 1 double aft cabin with independent access, including a head and a separate shower
- > 1 double front cabin with independent access, including a head and a separate shower
- > 1 service area
- > 1 day head



Layout B

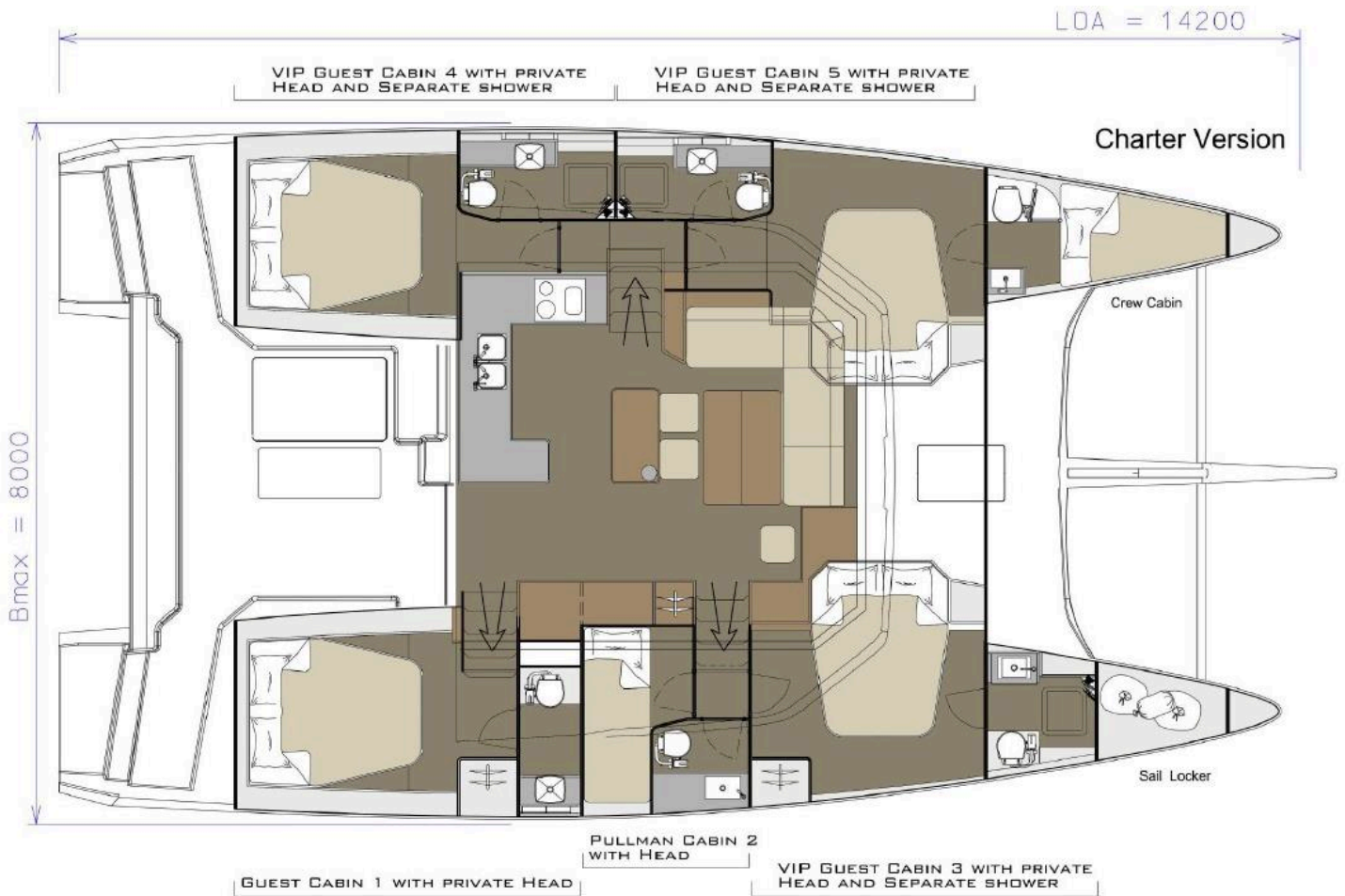
4 cabins - 5 heads + skipper

Port side float

- > 1 double aft cabin, including a head and a separate shower
- > 1 double front cabin, including a head and a separate shower

Starboard float

- > 1 double aft cabin with independent access, including a head and a separate shower
- > 1 double front cabin with independent access, including a head and a separate shower
- > 1 service area
- > 1 day head
- > 1 sail locker



Layout C

5 cabins - 5 heads + skipper

Port side float

- > 1 double aft cabin, including a head and a separate shower
- > 1 double front cabin, including a head and a separate shower

Starboard float

- > 1 double aft cabin with independent access, including a head and a separate shower
- > 1 double front cabin with independent access, including a head and a separate shower
- > 1 double cabin with pullman
- > 1 day head
- > 1 sail locker

Main Technical Specifications

Architects (Exterior & Interior design)	Felci Yachts
Length Overall	14,4 m / 48'
Hull length	14,2 m / 46'7"
Length waterline	14,1 m / 46'2"
Beam overall	8,0 m / 26'2"
Draft	1,3 m / 4'3"
Mast clearance	22,2 m / 72'8"
Displacement (EC)	16,5 T / 35273 Lbs
Full charge displacement	20 T / 44092 Lbs
Fresh water capacity	3 x 270 l (option 2x 270 l)
Fuel capacity	2 x 450 l
Number of berths	12
Engine	2 x 60HP Volvo
EC Certification	12A: 12 – B: 14 – C: 20 – D:22

Options

Hydraulic Platform	Tender Lift System
Layout	Owner / Charter

Sail Dimensions

Sail Area	124 m ² / 1 334 ft ²
Mainsail	76 m ² / 818 ft ²
Self-tacking Jib	48 m ² / 516.67 ft ²
Code 0	90 m ² / 968.75 ft ²
Gennaker	110 m ² / 1184 ft ²
Upwind sail area	120 m ² / 1292 ft ²



DUFOUR
CATAMARANS

Contacts:

JJL Catamarans

Via Monda 128

47121 Forli

Italy

Tomislav Šarić

ts@uth-sailing.com

+385 99 306 26 57

www.cervetti-catamarans.com