

TECHNICAL SPECIFICATIONS

---

DUFOUR 48 CATAMARAN



**DUFOUR**  

---

**CATAMARANS**

## Contents

---

MAIN TECHNICAL SPECIFICATIONS .....	2
OPTIONS .....	2
SAIL PLAN .....	2-3
HULL STRUCTURE .....	4
SAILS & RIGGING .....	4
MOTORIZATION .....	5
MOORING .....	5
WATER SYSTEM .....	6
ELECTRICAL SYSTEM .....	7
DECK LAYOUT .....	8-9
INTERIOR .....	10
SAMPLE BOOK .....	11
INTERIOR .....	12-13
LAYOUTS .....	14-18



## Main Technical Specifications

---

Architects (Exterior & Interior design)	Felci Yachts
Length Overall	14,4 m / 48'
Hull length	14,2 m / 46'7"
Length waterline	14,1 m / 46'2"
Beam overall	8,0 m / 26'2"
Draft	1,3 m / 4'3"
Mast clearance	22,2 m / 72'8"
Displacement (EC)	16,5 T / 35273 Lbs
Full charge displacement	20 T / 44092 Lbs
Fresh water capacity	3 x 270 l (option 2x 270 l)
Fuel capacity	2 x 450 l
Number of berths	12
Engine	2 x 60HP Volvo
EC Certification	12A: 12 – B: 14 – C: 20 – D:22

## Options

---

Hydraulic Platform	Tender Lift System
Layout	Owner / Charter

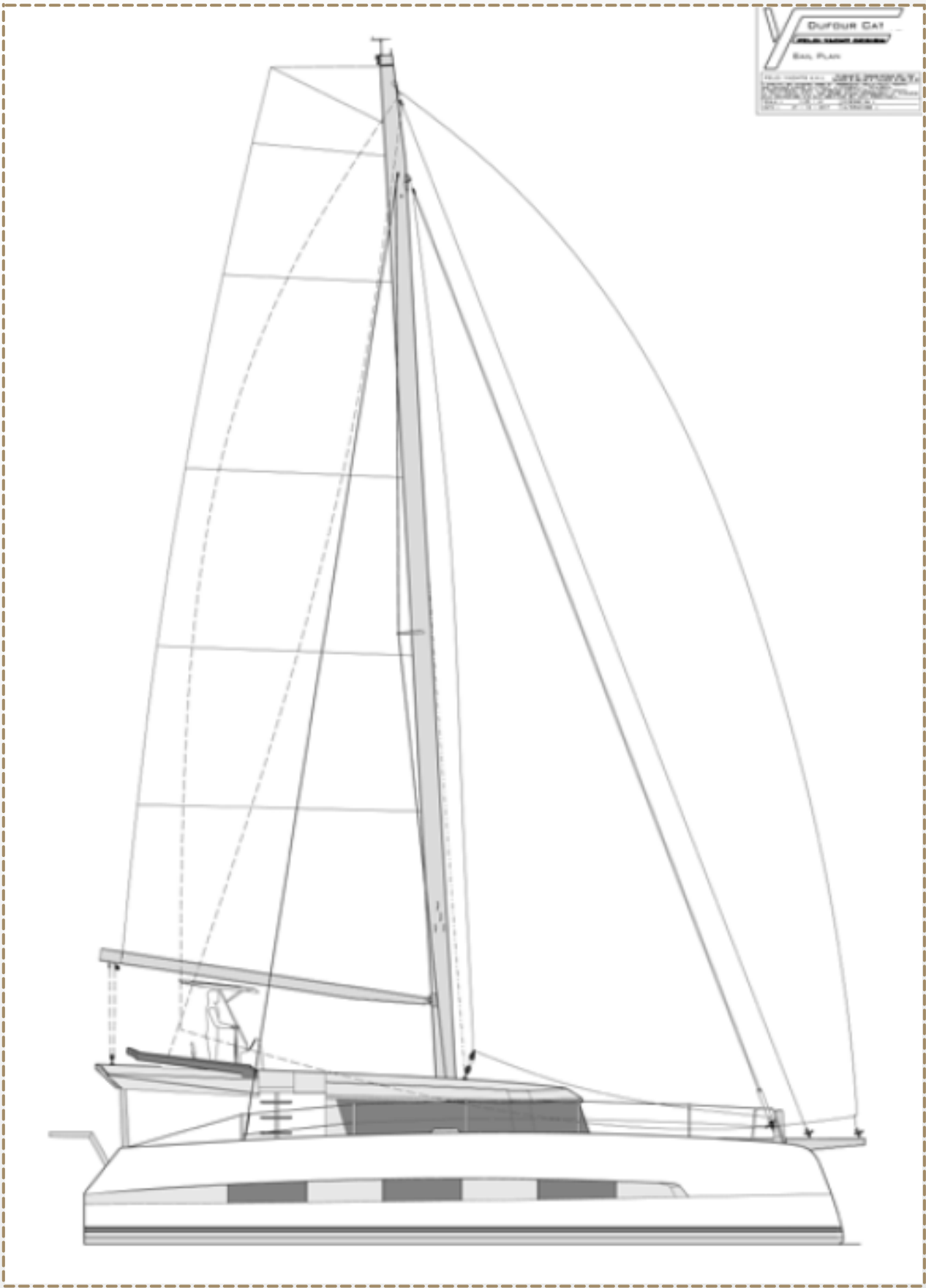
## Sail Dimensions

---

Sail Area	124 m <sup>2</sup> / 1 334 ft <sup>2</sup>
Mainsail	76 m <sup>2</sup> / 818 ft <sup>2</sup>
Self-tacking Jib	48 m <sup>2</sup> / 516.67 ft <sup>2</sup>
Code 0	90 m <sup>2</sup> / 968.75 ft <sup>2</sup>
Gennaker	110 m <sup>2</sup> / 1184 ft <sup>2</sup>
Upwind sail area	120 m <sup>2</sup> / 1292 ft <sup>2</sup>



# Sail Plan



## Sails & Rigging

---

### SAILS

Full batten mainsail with square top, made of Dacron

Self-tacking furling jib made of Dacron, with UV protective band

Lazy jack and lazy bag

All sails in white color and made by ELVSTROM

### STANDING RIGGING

Anodized aluminum mast with mainsail track and ball-bearing

Diamond shaped spreaders rig

Round section pillar supporting the mast, with stainless mirror polishing

Anodized aluminum boom

Encased shrouds

Forestay with furler for self-tacking jib

Manual winch size 48XT (x2) - ANTAL 48

Electric winch size 48EXT (x1) - ANTAL 48

Rope clutch on flybridge - ANTAL

Mainsail track and ball-bearing with 2 rope clutches - ANTAL

Anodized aluminum cross beam

Composite Bowsprit with integrated anchor cradle

Adjustable lazy-jacks

### STANDING RIGGING

Polyester sheets, lines and halyards

Double purchase mainsail halyard

Self-tacking jib halyard

Mainsail & Self-tacking jib sheets

Boom topping lift

Three reefing lines

Genoa furling sheet

Mainsail traveler car lines (x2)



## Hull Structure

---

Polyester and high quality anti-osmotic resin composite

Hull, deck and flybridge completely laminated

Hull with PVC core and solid laminate central line, covered with white gelcoat

Deck and flybridge with PVC core

Infused laminated marine plywood bulkheads

Composite longitudinal crossbeam

## Motorization

---

Two 60 HP diesel engines with saildrive - VOLVO PENTA

Engine control panel - VOLVO PENTA

Mechanical engine throttles at helm station on flybridge

Two alternators (12V - 80A)

Tri-blade fix-pitch propeller (17x16)

Sea water filter

Ventilation of the engine compartment, with exhaust the aft transom

Sound-proofing of the engine compartment

Fuel circuit:

- 2 plastic tanks (450 liters)
- Fuel filter system
- Manual fuel shut off valve
- Gauge at the general control panel

## Mooring

---

Mooring cleats (x6)

Electrical windlass (1500W - 12V), with vertical axis - QUICK

Anodized aluminum cross beam with mooring point for anchor

Anchor - ULTRA UA 45kg + swivel ULTRA UFS13-60

Galvanized chain (12mm thickness, 75m length)



## Water System

---

### **FRESH WATER CIRCUIT**

Fresh water tanks: (3x270 liters)

Tank gauge at the control panel

Fresh water circuit with 1 main water group

Water heater (60 liters) (220V) - QUICK

### **GREY WATER**

Shower with automatic pump - WHALE

### **BLACK WATER**

Black water tanks (5x45 liters)

Manual sea water toilet (electric toilet is an option) - JABSCO

Waste tank discharge connection on the deck

### **BILGE**

Manual bilge pump - WHALE

Automatic immersed bilge pump with sensor - WHALE

Bilge switch at the control panel



## Electrical System

---

### 12V - DC POWER CIRCUIT

Alternators (12V - 80A) - VOLVO

Start batteries (12V - 50A) (x2)

Service gel batteries (12V - 165A) (x5)

Engine batteries breaker in engine compartments

Service batteries breaker in portside engine compartment

General control panel at chart table with circuit breaker protection

USB socket in the saloon

USB socket in every cabin

### 220V – AC CIRCUIT

Sockets in saloon and cabins

Inverter (option)

Generator (option)

### LIGHTING

Exterior LED lighting (12V) - OSCULATI

Interior LED lighting (12V) - OSCULATI

Navigation lights on the mast - OSCULATI

Deck light on the mast - OSCULATI

Mooring light on the mast - OSCULATI



## Deck Layout

---

### STERN

Hot/cold deck shower - WHALE

Stainless steel swim ladder with handle - OSCULATI

### AFT COCKPIT

Bench with large storage locker

Gas locker for two bottles of 13 kg

Gas grill & washbasin - ENO

Liferaft locker

Corian top exterior furniture

Tender lift system

Cockpit table

Fridge (50 l) - INDEL MARINE

### FLYBRIDGE

Access from deck with two sets of stairs

Large bench with backrest + helm seat

Ergonomic helm station

Leather covered steering wheel

Navigation instruments - RAYMARINE

Engine throttle & panels - VOLVO

Bimini top over whole seating area

Mini fridge - INDEL MARINE

### FRONT COCKPIT

Storage locker

Net with nylon threads

## Openings

---

Access to saloon from cockpit by sliding door

Flush deck hatch T10 (x4)

Flush deck hatch T50 (x3)

Flush deck hatch T44 (x2)

Flush deck hatch T60 (x4)

Side fix PMMA hull portholes (x6)



## Deck Layout

---



## Interior

---

### GENERAL

Construction in Alpi Oak  
Plywood floorboard  
Finishing with UV varnish  
Plywood ceiling panels covered with fabric

### STANDING HEADROOM

Salon 2.00m  
Cabin 2.00m  
Head 2.00m

### MATTRESS AND UPHOLSTERY

Multi-layer marine mattresses made of alveolar foam (120mm tick)  
Mattresses treatment: anti-microbial, anti-bacterial, non-allergenic, anti-mite  
Standard upholstery  
Synthetic fabrics adapted to marine environment:  
Washable (40°C)  
U.V. resistant  
Water repellent, with anti-stain treatment  
Mattress sizes:  
Aft cabins - 170cm x 200cm  
Fore cabins - 160cm x 180cm  
Pullman cabin (upper bed) - 80cm x 190cm  
Pullman cabin (lower bed) - 80cm x 180cm  
Skipper cabin (upper bed) - 80cm x 190cm  
Skipper cabin (lower bed) - 50-120cm x 185cm



## Sample Book



OAK  
[ BHD & Furnitures ]



OAK  
[ Floorboards ]



SIDE PANELLING



GALLEY TOP



BORA BORA 21 FABRIC



BONANZA MOON



BORA BORA 17 FABRIC



LODGE STORM 29



## Saloon

---

### PORTSIDE GALLEY

L- shape galley

Kitchen amenities:

Double sink with integrated drain rack in the worktop

Hot/cold mixer tap

Bottle rack

4-burner gas stove - WHIRLPOOL

Gas oven - WHIRLPOOL

Dishwasher - BOSCH

Microwave - WHIRLPOOL

Storage under sink:

1- door furniture with shelf

1 cutlery drawer

2 pan- drawer

High storage compartments and lockers

### STARBOARD GALLEY

High storage compartments and lockers

Stainless steel fridge (130L)

USB socket station

### FORWARD AREA

L-shape sofa

Foldable chairs (x2)

Dinner table

Chart table + seat

General control panel



# Saloon



## Layouts

---

### MAIN LAYOUT (3 VERSIONS)

3 cabins + 4 heads

4 cabins + 5 heads

5 cabins + 5 heads

#### PORTSIDE

#### STARBOARD

Owner cabin  
Aft bathroom  
Skipper Cabin

A

Aft guest cabin  
Aft bathroom  
Service room  
Front guest cabin  
Fore bathroom  
Skipper Cabin

Aft guest cabin  
Aft bathroom  
Front guest cabin  
Fore bathroom  
Skipper Cabin

B

Aft guest cabin  
Aft bathroom  
Service room  
Front guest cabin  
Fore bathroom  
Skipper Cabin

Aft guest cabin  
Aft bathroom  
Front guest cabin  
Fore bathroom  
Skipper Cabin

C

Aft guest cabin  
Aft bathroom  
Pullman cabin  
Front guest cabin  
Fore bathroom  
Skipper Cabin



## Layouts

---

### CREW SPACE LAYOUT

PORTSIDE

STARBOARD

---

Pullman crew cabin

1

Crew bathroom

---

Single bed crew cabin  
with head

2

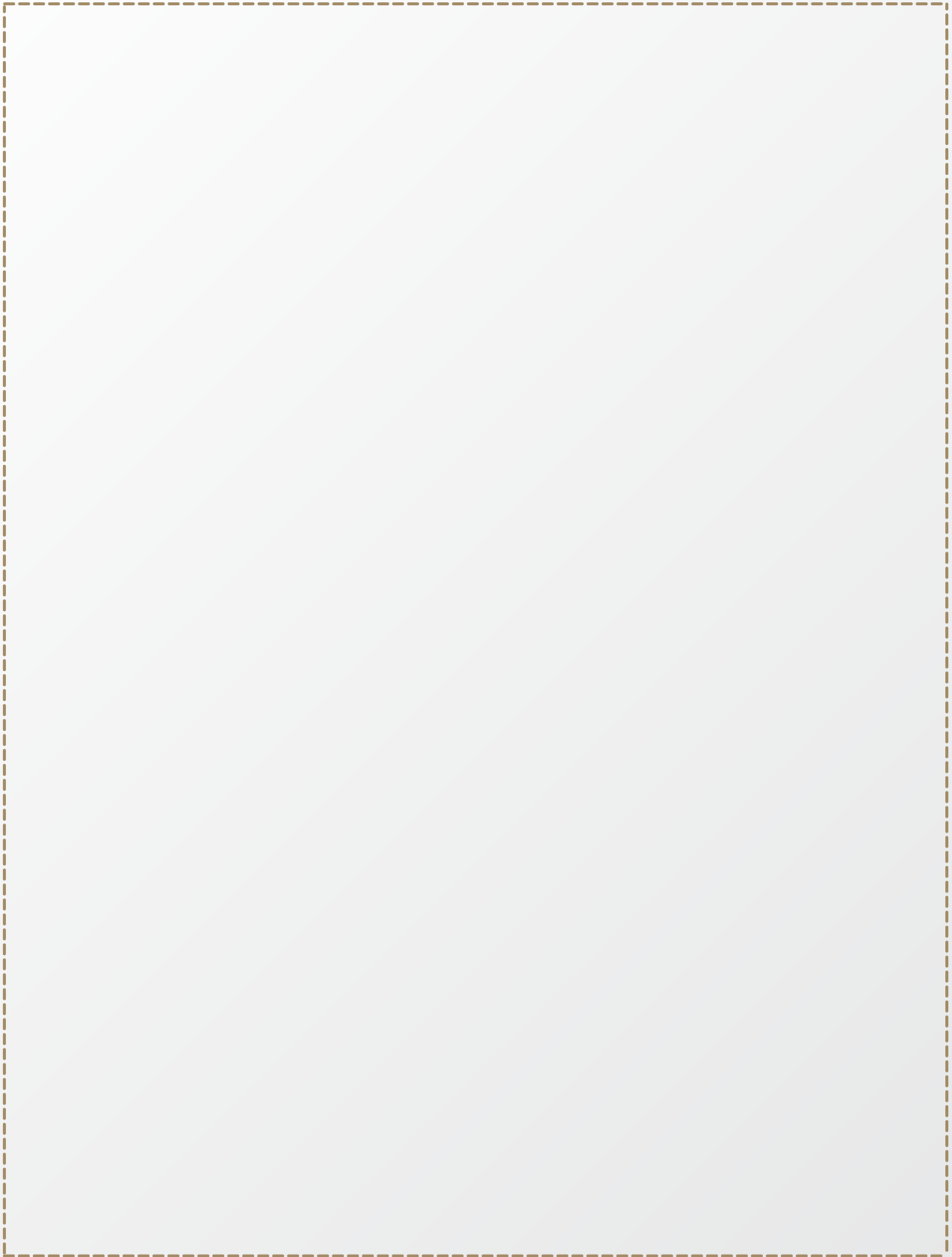
Storage locker

---

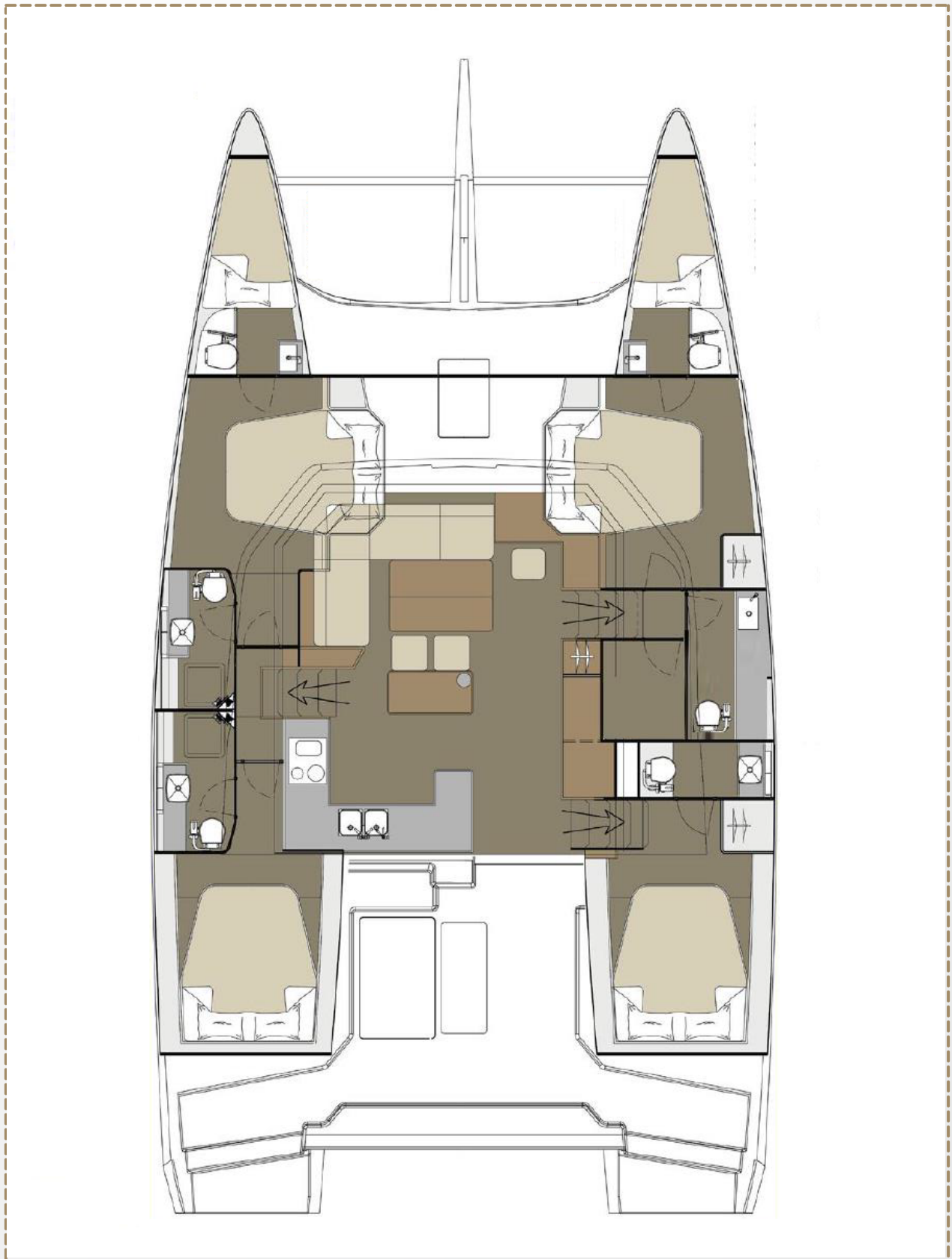


## Layout A

---



## Layout B



# Layout C

